

The Maori names for animals

Add a short description

An illustration of two dolphins leaping from the water. The dolphins are depicted in shades of blue and white, with a dark blue dorsal fin and a lighter blue underbelly. They are shown in mid-leap, with their bodies curved and tails pointing upwards. The background is a gradient of light green, with a dark green circular shape behind the dolphins. A white wavy line represents the water's surface.

Dolphin

Aihe

Dog

kurī



horse

hoiho



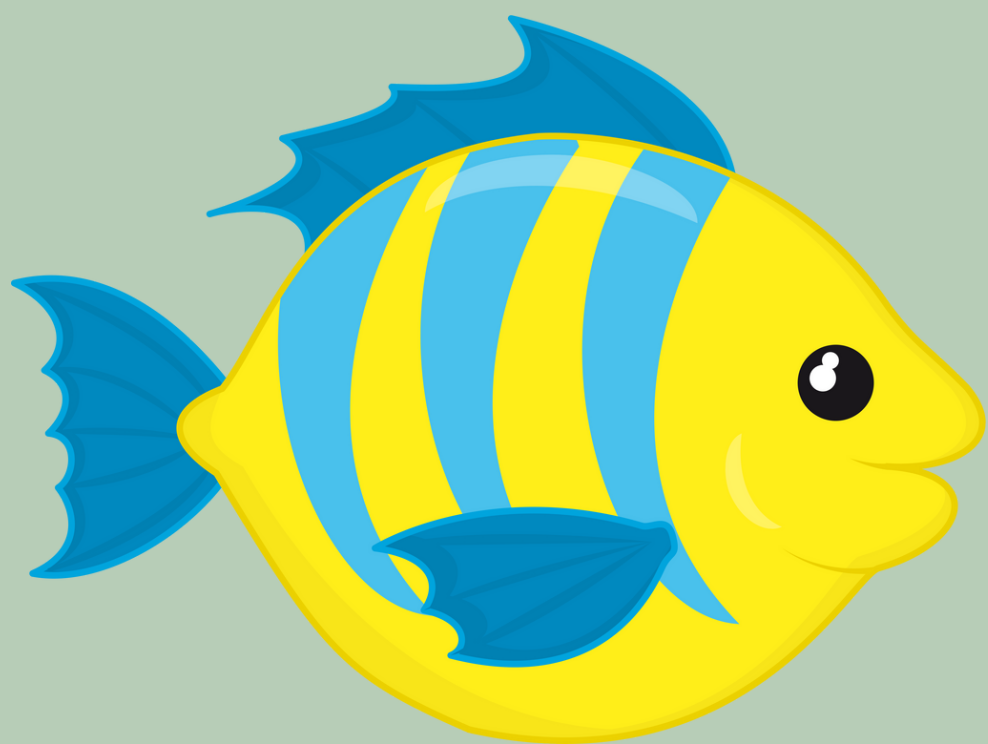
cat



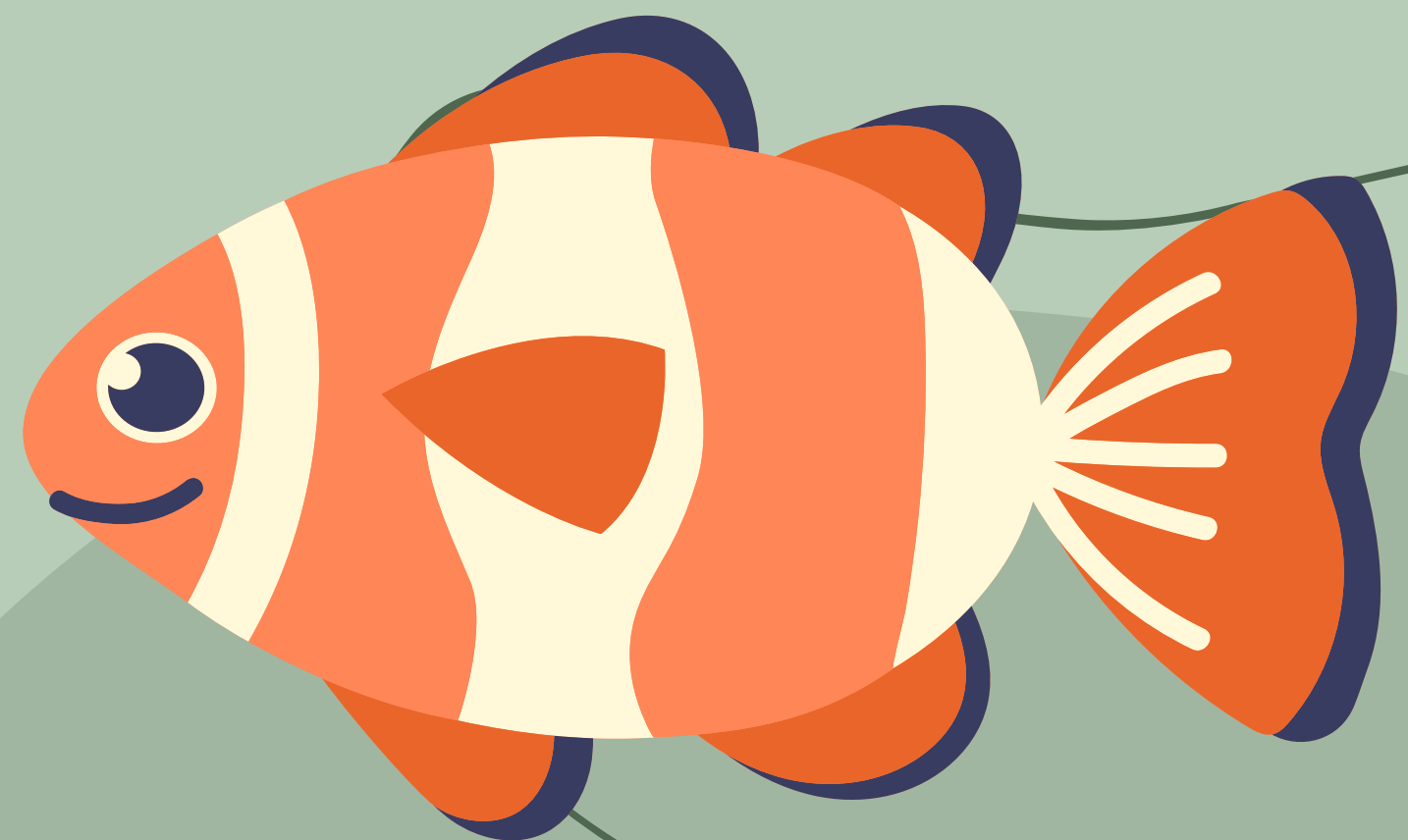
ngeru



Fish



Ika



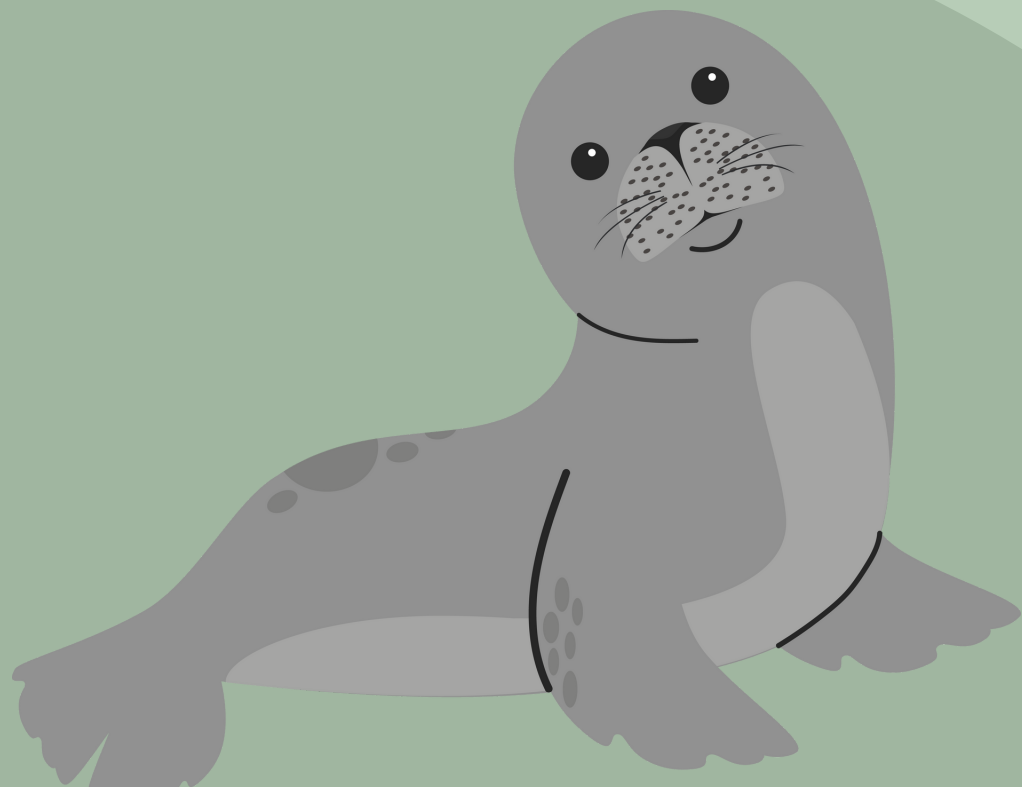
Pig

Poaka



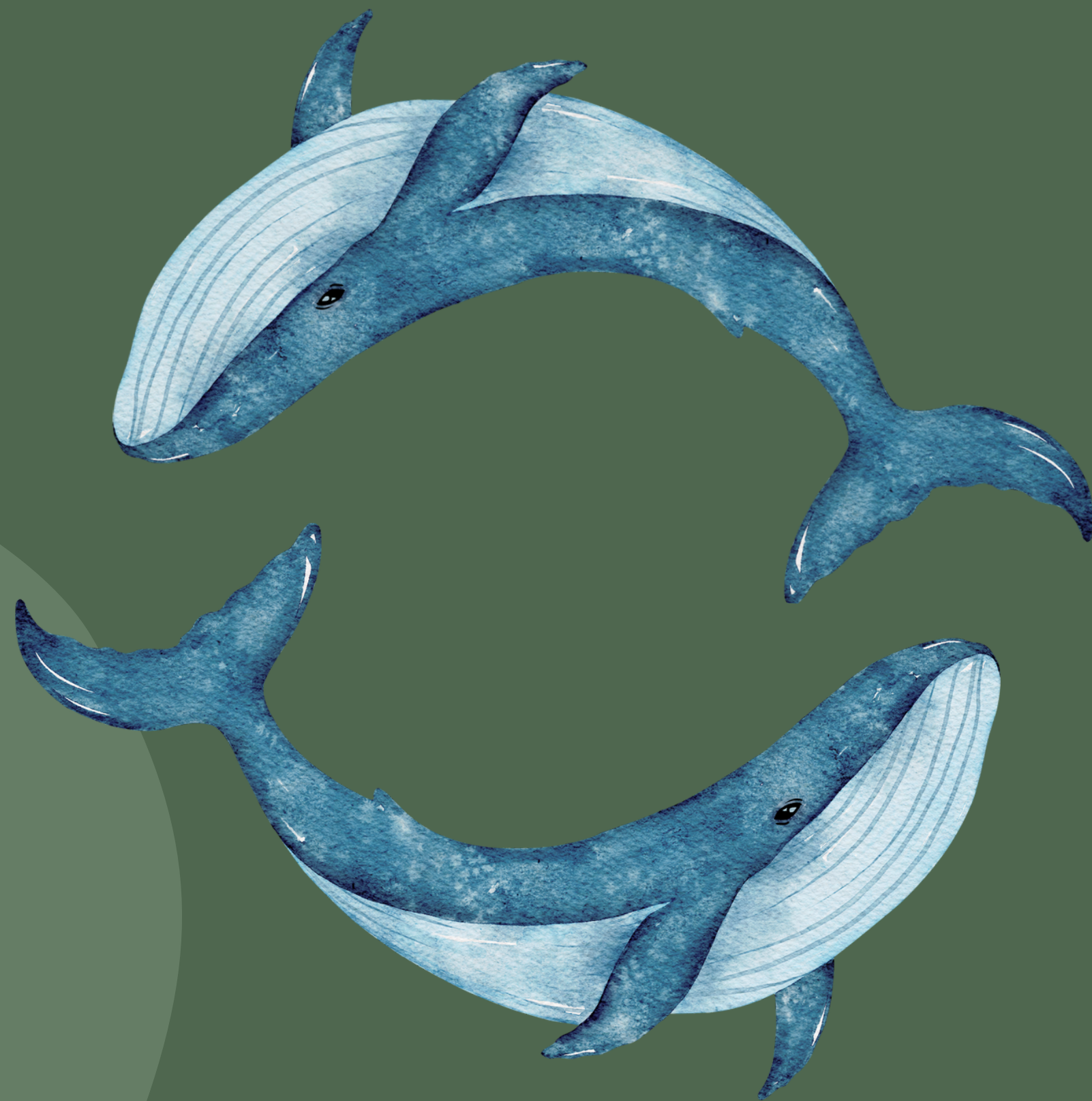
seal

kekeno



whale

tohorā



donkey



kaihe



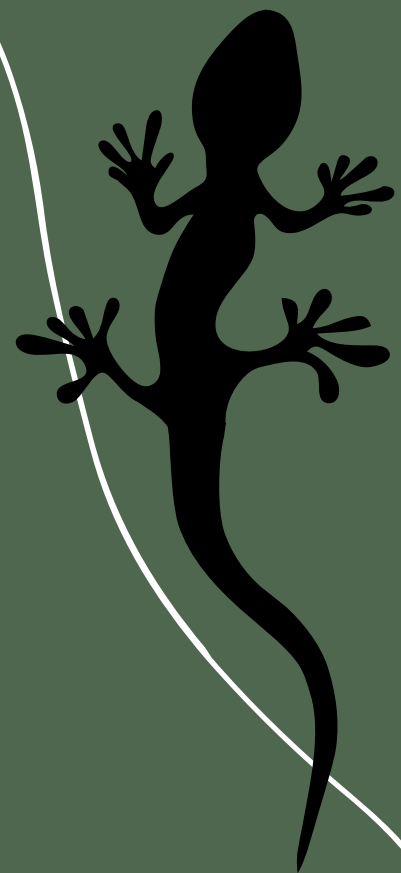
Dragon

tarakona

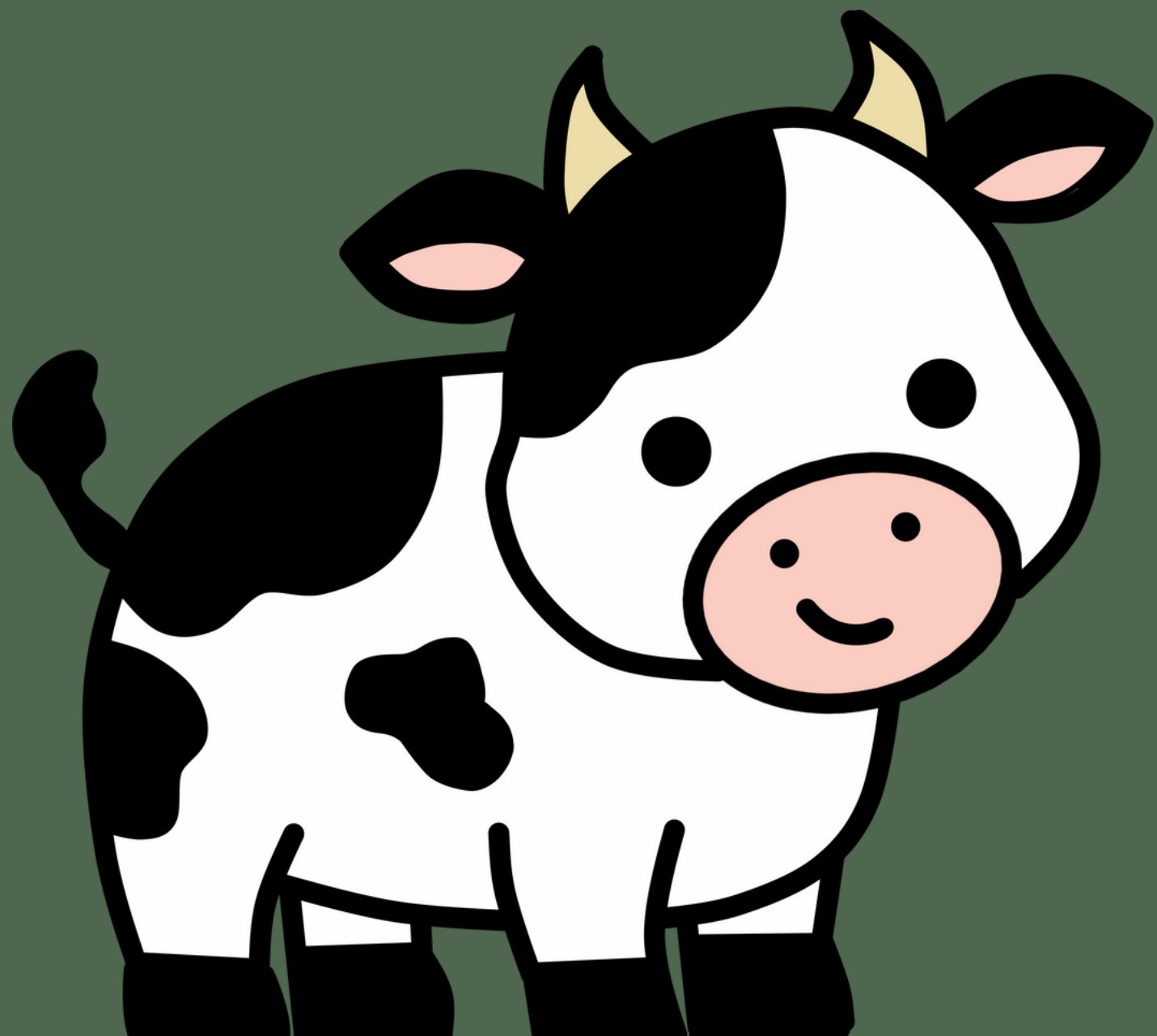


Lizard

ngārarā



COW



kau

